

# ISE 200 Series G3

Enterprise-class storage with 100% performance at 100% utilization

X-IO's Intelligent Storage Element (ISE) 200 Series G3 Performance Storage Arrays **deliver consistent high performance, even at 100% capacity**, for virtualized, database, and cloud-hosting environments.

The ISE provides the industry's most efficient price/performance, does not require specialist storage skills, and provides the highest levels of reliability, backed by a standard 5-year warranty.



**Our servers used to go down weekly—now we're at 100%. Installation took just one hour. Performance doesn't change whether we're using 25% or 100% of capacity.**



Jessie Twaddle, Associate Director of Core Services, GAC

## Maintain consistent and available virtualized server consolidation

Gain consistent high performance for all servers

Ensure business-critical applications remain online with optional active-active metro storage clusters

Maximize consolidation without impacting performance

## Accelerate database management systems and applications

Process data four times faster than other disk arrays of its size

Reduce data warehousing load and analytics processing times

Keep your mission-critical business information on the most reliable storage platform in the industry

## Reduce cost and enable more margin for cloud services

Enable 3x – 4x the performance of traditional storage per disk

Utilize 100% capacity without impacting client performance

Experience the operational cost savings of a highly reliable, self-healing array backed by a no-cost standard 5-year warranty

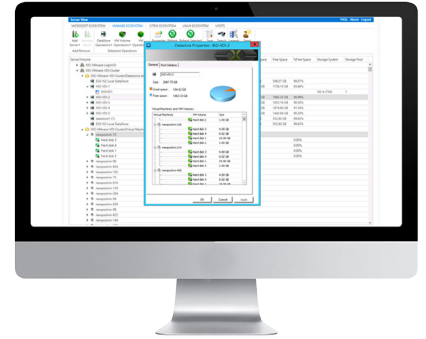
# ISE 200 Series G3

Enterprise-class storage with 100% performance at 100% utilization

## Software that works for you

We know that reliable, high-performance storage is an integral part of your IT infrastructure. Managing your organization's storage can be a huge challenge.

X-IO has developed a full suite of ISE management applications and integration to simplify the operations of your data center and maximize the performance of your storage solution.



## Tightly integrated

ISE Manager Suite enables simple and efficient provisioning and management of physical storage for Windows and Linux servers as well as storage in Citrix, Hyper-V, and VMware infrastructures.

Relationships between storage, servers and VMs can be managed easily. ISE Manager Suite provides simple, single-interface access to volume creation and assignment, all with a few clicks of the mouse.

MODEL	ISE 240 G3 ISE 240i G3	ISE 250 G3 ISE 250i G3
<b>Before RAID</b>	38.4 TB	57.6 TB
<b>RAID 10 capacity</b>	17.4 TB	21.5 TB
<b>RAID 5 capacity</b>	27.8 TB	41.5 TB
<b>Performance at full capacity</b>	Up to 15,000 IOPS Up to 2 GB/s bandwidth ISE intelligent caching algorithms will optimize I/O sizes between 512 B – 1 MB	
<b>Host connectivity</b>	40 GbE and 10 GbE iSCSI options – 4 QSFP ports 8 Gb Fibre Channel – 8 SFP ports (supports both SAN and DAS attached) 1 GbE Management Port with Wake-on-LAN	
<b>Features</b>	Thin Provisioning, QoS, ReST Web Services API, Active-Active Synchronous Mirroring (optional), Data at Rest Encryption (Model 240 and 250)	
<b>Power</b>	Voltage 100-240 VAC, 47-63 Hz Current 6.6 A at 110V, 3.6 A at 208 V Power 600 W (typical), 700 W (max) Heat dissipation (max) 2400 BTU/hr	
<b>Physical</b>	5.2" (13.2 cm) height x 17.5" (44.45 cm) width x 28.5" (72.8 cm) depth 72 lbs (32.9 kg) without DataPacs	