

ISE 200 Series G3

Enterprise-class storage with 100% performance at 100% utilization

X-IO's Intelligent Storage Element (ISE) 200 Series G3 Performance Storage Arrays **deliver consistent high performance, even at 100% capacity**, for virtualized, database, and cloud-hosting environments.

The ISE provides the industry's most efficient price/performance, does not require specialist storage skills, and provides the highest levels of reliability, backed by a standard 5-year warranty.



“Our servers used to go down weekly—now we're at 100%. Installation took just one hour. Performance doesn't change whether we're using 25% or 100% of capacity.”



Jessie Twaddle, Associate Director of Core Services, GAC

Maintain consistent and available virtualized server consolidation

Gain consistent high performance for all servers

Ensure business-critical applications remain online with optional active-active metro storage clusters

Maximize consolidation without impacting performance

Accelerate database management systems and applications

Process data four times faster than other disk arrays of its size

Reduce data warehousing load and analytics processing times

Keep your mission-critical business information on the most reliable storage platform in the industry

Reduce cost and enable more margin for cloud services

Enable 3x - 4x the performance of traditional storage per disk

Utilize 100% capacity without impacting client performance

Experience the operational cost savings of a highly reliable, self-healing array backed by a no-cost standard 5-year warranty

Interested in learning more or starting a proof of concept?

Contact us today at fastforever@x-io.com, +1 719.388.5500, +1 800.734.4716, or +44 20 3239 4669

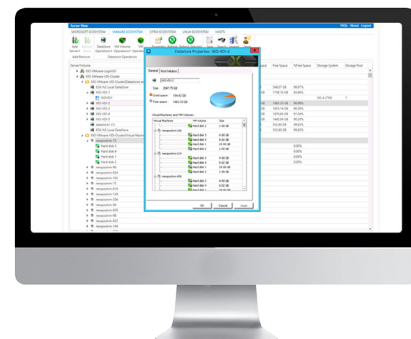
ISE 200 Series G3

Enterprise-class storage with 100% performance at 100% utilization

Software that works for you

We know that reliable, high-performance storage is an integral part of your IT infrastructure. Managing your organization's storage can be a huge challenge.

X-IO has developed a full suite of ISE management applications and integration to simplify the operations of your data center and maximize the performance of your storage solution.



Tightly integrated

ISE Manager Suite enables simple and efficient provisioning and management of physical storage for Windows and Linux servers as well as storage in Citrix, Hyper-V, and VMware infrastructures.

Relationships between storage, servers and VMs can be managed easily. ISE Manager Suite provides simple, single-interface access to volume creation and assignment, all with a few clicks of the mouse.

MODEL	ISE 230 G3 ISE 230i G3	ISE 240 G3 ISE 240i G3	ISE 250 G3 ISE 250i G3
Before RAID	28.8 TB	38.4 TB	57.6 TB
RAID 10 capacity	13.0 TB	17.4 TB	21.5 TB
RAID 5 capacity	20.8 TB	27.8 TB	41.5 TB

Performance at full capacity Up to 15,000 IOPS
Up to 2 GB/s bandwidth
ISE intelligent caching algorithms will optimize I/O sizes between 512 B – 1 MB

Host connectivity 40 GbE and 10 GbE iSCSI options – 4 QSFP ports
8 Gb Fibre Channel – 8 SFP ports (supports both SAN and DAS attached)
1 GbE Management Port with Wake-on-LAN

Features Thin Provisioning, QoS, ReST Web Services API, Active-Active Synchronous Mirroring (optional), Data at Rest Encryption (Model 240 and 250)

Power Voltage 100-240 VAC, 47-63 Hz
Current 6.6 A at 11 0V, 3.6 A at 208 V
Power 600 W (typical), 700 W (max)
Heat dissipation (max) 2400 BTU/hr

Physical 5.2" (13.2 cm) height x 17.5" (44.45 cm) width x 28.5" (72.8 cm) depth
72 lbs (32.9 kg) without DataPacs